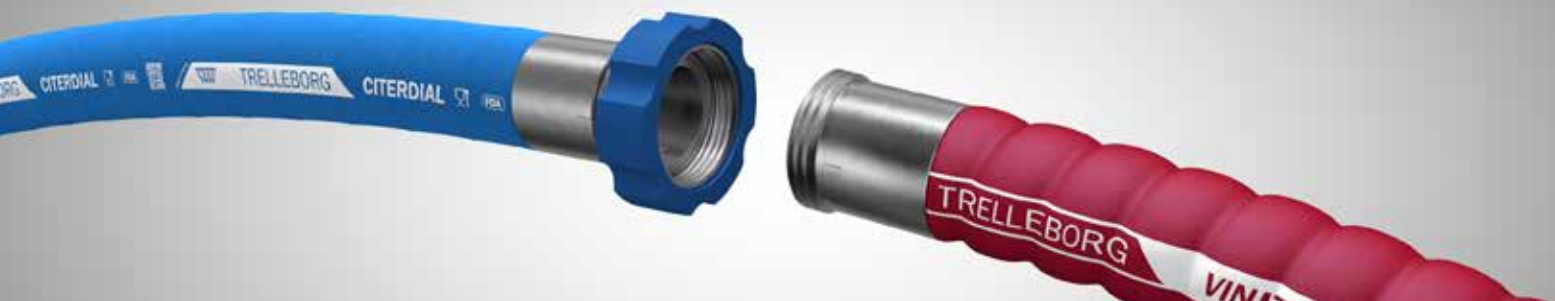




# Cleaning procedure for Trelleborg food hoses



Ref. EN2020.14.10

**Before first use**, you should proceed as follows in order to prevent any alteration of your fluid.

- Fill hose with hot water (70°C to 80°C).
- Keep water inside for minimum 2 hours.
- Then, clean hose using any of the following cleaning processes which should prevent early ageing of your hoses.

## △ Advice for cleaning processes

- These recommendations are based on maximum of 2 cycles a day (with maximum 15 minutes in total for the chemical cleanings).
- **Every cleaning cycle must be immediately followed by a complete rinse.**
- For any other chemical or mix of chemicals, concentration, duration, temperature and frequency, please contact us to select the best hose for your application.

TRELLEBORG	Max duration in total	CITERDIAL LACTADIAL - ALCODIAL VENDANGE - VINITRELL	SUPERVRAC AL EC TRELLVAC AL EC	ALIKLER D ALIKLER G2 - BIOVAST BIOCLEAN - KLENET	MILLESIME TRELLVIN - BERGALAV MULTIDIAL UPE
Hot water	max 30 minutes	• max 90°C		• max 95°C	
Steam (open end circuit)	max 10 or 30 minutes	• max 110°C during max 10 minutes	• max 130°C during max 30 minutes		
Nitric acid	max 15 minutes	• 0.1% at max 85°C • 3% at room temperature			
Phosphoric acid		• 1% at max 85°C • 3% at room temperature			
Chlorinated products (hydrochloric acid, sodium hypochlorite...)		• 1% at max 70°C			
Sodium hydroxide		• 2% at max 80°C • 5% at room temp.	• 2% at max 60°C • 5% at room temperature	• 2% at max 80°C • 5% at room temp.	
Hydrogen peroxide		• 3% at room temperature			• 1.5% at max 85°C • 3% at room temp.
Peracetic acid		• 0.5% at room temp.	• 1% at room temp.		• 1% at max 50°C

## △ Regular checks

It is recommended to carry out regular checks on the hose (cover and tube) to make sure it is still safe of use as its original properties will eventually alter upon usage.

## △ Storage

Keep away from (sun) light and heat. Only use pierced plugs when needed.

## △ Stagnation

**Prohibited** except with ALCODIAL or MULTIDIAL UPE, for limited duration.

## ⊘ Be careful

Do not use high pressure cleaning systems to wash inside the hose.