

Overview of Fittings for Water Application

**Water®
Profi**
by **LUDECKE**

NEW!

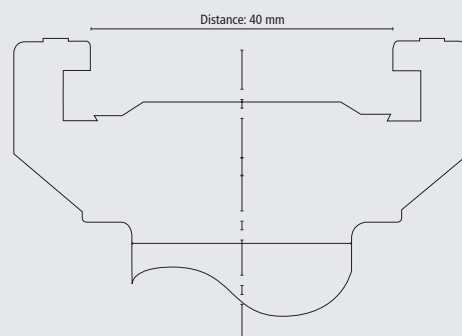
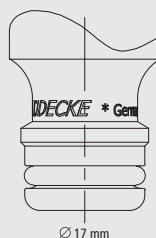
**WPN
DN 9**

**Water®
Profi**
by **LUDECKE**

Claw Couplings

Series

Plug Profile
(original size)



Materials:

Body:

MS 58 nickel-plated

Sleeve:

MS 58 nickel-plated

Valve body:

MS 58 nickel-plated

Valve:

MS 58 nickel-plated

Springs:

Spring Steel 1.4310

Balls:

Stainless Steel 1.4034

Seals:

NBR/ HNBR

Plug:

MS 58 nickel-plated

Max. Working Pressure:

PN 16 bar

Temperature:

up to +95°C

Thread types:

ISO 228

Type of valve:

single/ straight-through

Operation:

One-Hand

Miscellaneous:

-

Page:

368

Brass CW617N

-

-

-

-

-

EPDM

-

PN 25 bar

up to +95°C

ISO 228

straight-through

One-Hand

-

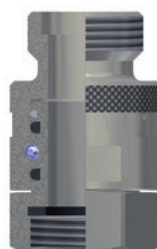
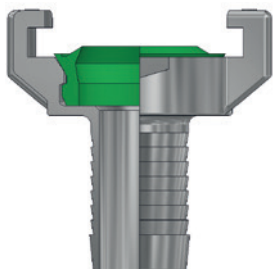
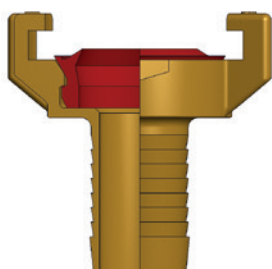
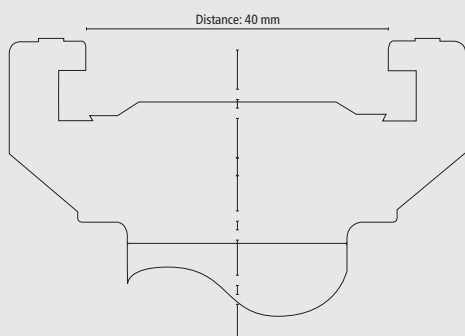
376

Claw Couplings for Drinking Water Applications

Claw Couplings for Strict Hygiene Requirements

Swivel Transmissions

Hose Screw Type Fittings



Brass CW617N
-
-
-
-
-
NBR
-
PN 40 bar
-5°C – +100°C
ISO 228
straight-through
Two-Hands
DIN 50930/6, DIN 17660, DVGW W270, KTW approval according to D2
379

Chromium Steel similar to Stainless Steel 1.4401
-
-
-
-
-
FKM
-
PN 40 bar
-5°C – +100°C
ISO 228
straight-through
Two-Hands
-
381

MS 58 nickel-plated
-
-
-
-
-
EPDM
-
PN 10 bar
up to +95°C
ISO 228
straight-through
Two-Hands
Connection straight/ 90°
383

MS 58 plain/ nickel-plated
-
-
-
-
-
EPDM
-
PN 10 bar
up to +95°C
ISO 228
straight-through
Two-Hands
-
383

Quick Connect Couplings and Spray Nozzles



The WaterProfi by **LUDECKE**® quick connect couplings are entirely made of nickel-plated brass. This makes them more robust and wear-resistant compared to similar plastic couplings.

NEW!

To guarantee enhanced usability, the quick connect couplings have been thoroughly optimised.

For example, the new compact version is now very light in weight. The ball shut-off further improves one-hand operation and greatly facilitates your job. The smooth surfaces avoid dirt from collecting and are easy to clean.

All quick connect couplings can be combined with the WaterProfi by **LUDECKE**® spray nozzle and wand nozzle.

Advantages:

- High-quality materials
- Robust, absolutely leakage-proof and durable
- Easy to couple
- Compact size and ergonomic sleeve outline
- Smooth surfaces to prevent dirt from collecting
- Wide pressure range and high flow rates
- Compatible with standard plug profiles
- Different sizes, connection and valves types

WaterProfi®
by **LUDECKE**

Excellent Quality for Trouble-Free Use

The quick connect couplings are ideally suited for water pipes in industrial applications, trades, gardening, landscaping or private households. Due to their one hand operation, they can be used especially in areas which require a quick and flexible way of working.



Connected in Seconds

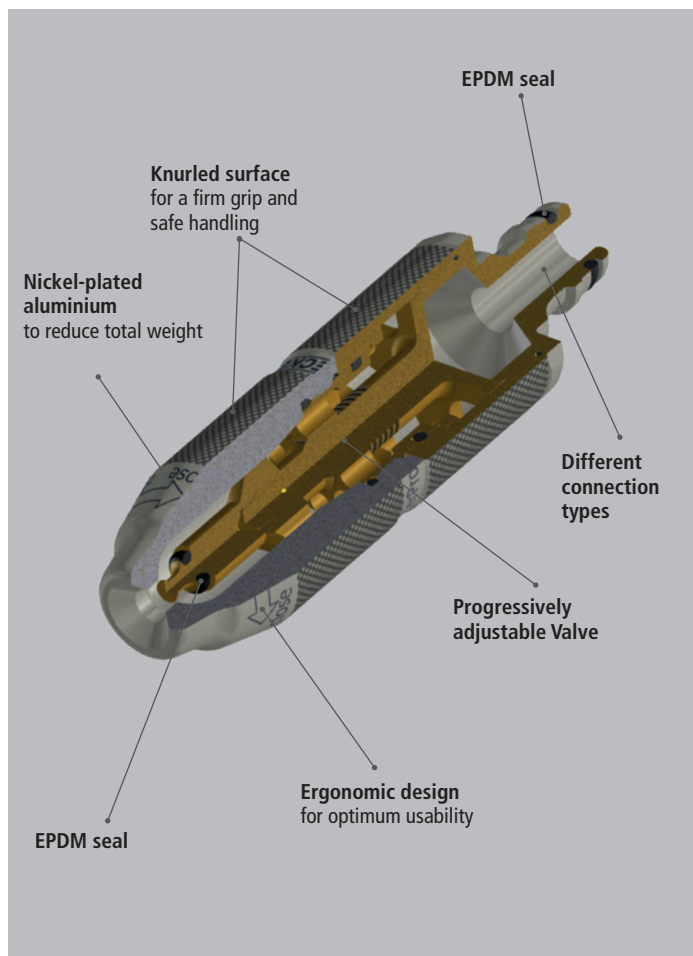
To connect, push the plug into the coupling. The locking sleeve automatically slides towards the plug and engages.



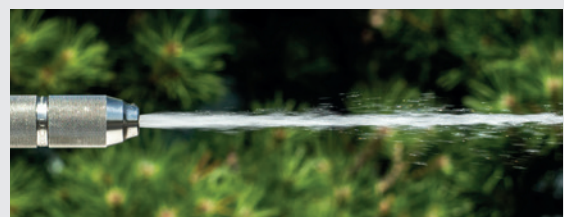
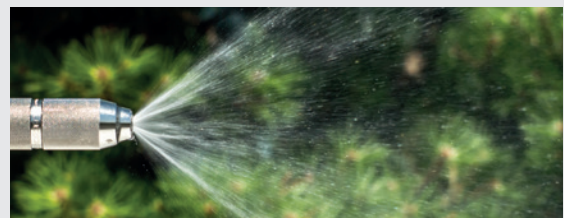
To disconnect, use one hand to hold the plug firmly. With your other hand push back the locking sleeve and pull the plug from the coupling. After disconnecting, the locking sleeve automatically slides back into its original position (when using non-valved couplings, shut off the media supply before disconnecting).

WaterProfi Spray Nozzle

The WaterProfi by **LUDECKE**® spray nozzle is characterised by its innovative design and sophisticated technical features. The front part of the nozzle is made of nickel-plated aluminium to minimize weight. All other parts are made of brass. At the nozzle orifice, an additional sealing ring prevents leakages. The knurled sleeve allows for a firm grip which enables safe handling even in wet conditions.



Easy Flow Control - from Mist to Full Water Jet



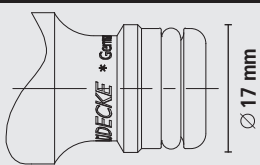
The water jet can be easily adjusted or turned off by turning the front part of the nozzle without increasing the nozzle length. Thanks to the perfect interaction between the valve spindle and the inner geometrics of nozzle and nozzle valve the WaterProfi Spray Nozzle enables a fine-tuned flow control from mist to full water jet.

Quick Connect Couplings

Series WPN made of Brass nickel-plated

DN 9

Plug profile (original size)



- One-hand quick connect couplings made of brass MS 58 nickel-plated
- Easy to couple, wide pressure range, leakage-proof, durable, robust, safe and reliable
- Compact size and ergonomic sleeve outline for perfect usability
- High flow rates due to optimised passage
- Spray nozzle: water flow can be turned off, flow control from mist to full water jet
- Compatible with standard plug profiles
- Optional with straight-through or shut-off valves
- **Universal one-hand quick connect coupling for water pipes in industrial applications, trades, landscaping, gardening or private household**

Materials:

- Body, sleeve, valve body, valve, plug: Brass MS 58 nickel-plated
- Balls: Stainless steel 1.4034
- Springs: Spring steel 1.4310
- Seals: NBR/ HNBR
- Claw: Brass CW617N
- Spray nozzle: Aluminium/ Brass MS 58 nickel-plated

Max. Working Pressure	Temperature	DN	Thread	Operation	Type of valve	Media	
PN 16 bar	up to +95°C	9	ISO 228	One-hand	single/ straight-through	Water	5

Couplings with hose barb

Hose connection	L	D	L1	Weight	Type No. w/o valve	Euro	Type No. w. valve	Euro
Hose i.D. 13	64	28	22.5	111	WPN 13 T	9.81	WPN 13 TAB	11.38
Hose i.D. 16	64	28	22.5	115	WPN 16 T	9.81	WPN 16 TAB	11.38
Hose i.D. 19	64	28	22.5	128	WPN 19 T	9.81	WPN 19 TAB	11.38
Hose i.D. 25	64	28	22.5	135	WPN 25 T	10.41	WPN 25 TAB	12.07

Couplings with female thread

Thread connection	L	SW	D	L1	Weight	Type No. w/o valve	Euro	Type No. w. valve	Euro
G 1/2 f	53	24	28	10	125	WPN 12 I	11.54	WPN 12 IAB	13.10
G 3/4 f	53	30	28	10	131	WPN 34 I	11.54	WPN 34 IAB	13.10

Couplings with male thread

Thread connection	L	SW	D	L1	Weight	Type No. w/o valve	Euro	Type No. w. valve	Euro
G 1/2 m	58	24	28	10	130	WPN 12 A	11.54	WPN 12 AAB	13.10
G 3/4 m	58	30	28	10	130	WPN 34 A	11.54	WPN 34 AAB	13.10

Couplings with hose squeeze nut

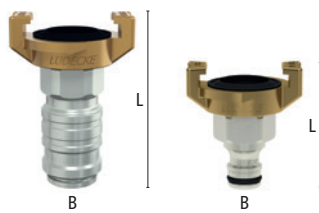
Hose connection	L	D	L1	Weight	Type No. w/o valve	Euro	Type No. w. valve	Euro
Hose 13x3	58	28	18	140	WPN 13 TQ	15.30	WPN 13 TQAB	17.40
Hose 19x4	58	28	18	174	WPN 19 TQ	16.20	WPN 19 TQAB	18.30

Screwing hose stems (for combination with WaterProfi couplings with female thread)

Thread connection	Hose connect.	L	L1	L2	Passage	Weight	Type No.	Euro
G 3/4 m	Hose i.D. 13	31	22.5	9	10	30	WPN 13 GT	4.21
G 3/4 m	Hose i.D. 16	31	22.5	9	13	31	WPN 16 GT	4.21
G 3/4 m	Hose i.D. 19	31	22.5	9	15	40	WPN 19 GT	4.21
G 3/4 m	Hose i.D. 25	31	22.5	9	19	48	WPN 25 GT	4.56

System Adapter Claw Coupling - Quick Connect Coupling

Connection	L	B	Weight	Type No.	Euro
WaterProfi Claw Coupling - Coupling WPN DN 9	73	54.2	254	WPNK-WPA	16.71
WaterProfi Claw Coupling - Plug WPN DN 9	59.5	54.2	160	WPNS-WPA	7.71



Quick Connect Couplings

made of Brass nickel-plated **Series WPN**

DN 9

Plugs with hose barb

Hose connection	L	D	L1	L2	Weight	Type No.	Euro
Hose i.D. 13	49	24	22.5	24	51	WPN 13 S	4.91
Hose i.D. 16	49	24	22.5	24	44	WPN 16 S	4.91
Hose i.D. 19	49	24	22.5	24	51	WPN 19 S	4.91
Hose i.D. 25	49	27	22.5	24	69	WPN 25 S	5.38



Plugs with female thread (with female thread sealing ring)

Thread connection	L	SW	L1	L2	Weight	Type No.	Euro
G 1/2 f	38	27	10	24	70	WPN 12 NI	3.97
G 3/4 f	38	30	10	24	68	WPN 34 NI	4.91
G 1 f	38	36	10	24	77	WPN 10 NI	6.20



Plugs with male thread

Thread connection	L	SW	L1	L2	Weight	Type No.	Euro
G 1/2 m	40	24	10	24	55	WPN 12 NA	3.97
G 3/4 m	41	30	10.5	24	76	WPN 34 NA	4.91



Plugs with hose squeeze nut

Hose connection	L	SW	L1	L2	Weight	Type No.	Euro
Hose 13x3	48	19	12	24	103	WPN 13 SQ	9.40
Hose 19x4	51	19	12.5	24	121	WPN 19 SQ	10.30

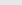


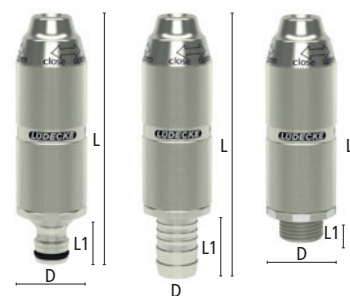
System Adapter

Connection	L	D	L1	L2	Weight	Type No.	Euro
DN 9 - DN 9	52	24	24	24	70	WPNA	4.21



Spray Nozzle with plug-/hose connection/-male thread

Connection	L	D	L1	Passage		Weight	Type No.	Euro
Plug WaterProfi	118	33	24	6.5	1	308	WSD-S	28.30
Hose i.D. 13	126	33	32	6.5	1	302	WSD 13 T	30.16
Hose i.D. 16	126	33	32	6.5	1	303	WSD 16 T	30.16
Hose i.D. 19	126	33	32	6.5	1	312	WSD 19 T	30.16
Hose i.D. 25	126	33	32	6.5	1	328	WSD 25 T	33.44
G 1/2 m	106	33	12	6.5	1	297	WSD 12 A	29.00



**Water[®]
Profi**
by **LUDECKE**