

SM 32 MC



STANDARD DIE SETS

	RANGE (mm)	LENGHT
32-06	6-16	40
32-08	8-18	40
32-11	11-21	40
32-14	14-24	40
32-17	17-27	40
32-20	20-30	45
32-23	23-33	50
32-26	26-36	50
32-31	31-41	55
32-34	34-44	60
32-39	39-49	60
32-43	43-53	65
32-45	45-55	65
32-51*	51-61	65

* Max. ferrule diameter before crimping 61 mm

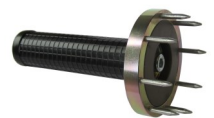
TECHNICAL SPECIFICATIONS

Max hose size	1 1/2" 1SN, 1 1/4" 2SN, 1" 4SP
Crimping force (kN):	1450
Max crimping Ø (mm):	61
Max opening (mm):	die diameter + 20
Standard motor:	2,2kW 400V 3-Ph
Different voltage versions available	
Control	Manual vernier
Master dies opening / Length(mm):	95/66
Crimping range (mm):	6 – 61
Weight (kg)	110 (without oil)
Dimensions (LxWxH mm)	640 x 430 x 590
Quick Change-set	Optional
Stand for machine	Optional

OPTIONS



Quick Change Set: including storage rack & handle



Solid stand with ability to mount the Quick Change set and machine

WWW.DHYDRO.COM

Wahlforssinkatu 10 - 80100 Joensuu - Finland - Tel. +358 13 120 490 - info@dhydro.com