

SERIE 62000

ADATTATORI IN ACCIAIO INOX AISI 316 L
 STAINLESS STEEL AISI 316L THREADED ADAPTORS
 ADAPTER IN EDELSTAHL AISI 316 L
 ADAPTATEURS EN ACIER INOXYDABLE AISI 316L
 ACCESORIOS EN ACERO INOX AISI 316 L
 ADAPTADORES EM AÇO INOXIDÁVEL AISI 316L


CARATTERISTICHE TECNICHE

TECHNICAL CHARACTERISTICS
 TECHNISCHE ANGABEN
 CARACTÉRISTIQUES TECHNIQUES
 CARACTERÍSTICAS TÉCNICAS
 CARACTERÍSTICAS TÉCNICAS


Norma di Riferimento

Reference standard

Entspricht der Norm

Norme de référence

Normativa de referencia

Norma de referência


Pressioni

Pressures

Druckbereich

Pressions

Presiones

Pressões

- 0.99 bar (-0.099 MPa)

140 bar (14 MPa)


Temperature

Temperatures

Temperatur

Températures

Temperaturas

Temperaturas

- 110 °C

+ 300 °C


Fluidi compatibili

Fluidi per Industria alimentare e chimica compatibili con i componenti del raccordo.

Fluids

Fluid for food and chemical industry compatible with fitting components.

Geeignete Medien

Medien für die Lebensmittel- und chemische Industrie, die beständig mit den Komponenten der Verschraubungen sind.

Fluides compatibles

Fluides alimentaires et chimiques compatibles avec les matériaux constituant les raccords.

Fluidos compatibles

Fluidos para industria alimentaria y química compatibles con los componentes del racor.

Fluidos compatíveis

Fluidos para Indústria alimentícia e química compatíveis com os componentes da conexão.


Filettatura
IT

Gas conica conforme ISO 7.1, BS 21, DIN 2999.
 Gas cilindrica conforme ISO 228 Classe A.
 Metrica conforme ISO R/262.

Threads
GB

Tapered gas in conformity with ISO 7.1, BS 21, DIN 2999.
 Parallel gas in conformity with ISO 228 Class A.
 Metric in conformity with ISO R/262.

Gewindearten
DE

Konisches Gewinde nach Norm ISO 7.1, BS 21, DIN 2999.
 Zylindrisches Gewinde nach Norm ISO 228 Klasse A.
 Metrisches Gewinde nach Norm ISO R/262.

Filetages
FR

Filetage conique conforme: ISO 7.1, BS 21, DIN 2999.
 Filetage cylindrique conforme: ISO 228 Classe A.
 Filetage métrique conforme: ISO R/262.

Roscas
ES

Gas cónica conforme ISO 7.1, BS 21, DIN 2999.
 Gas cilíndrica conforme ISO 228 Clase A.
 Métrica conforme ISO R/262.

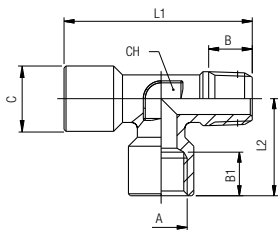
Roscas
PT

Gas conica conforme ISO 7.1, BS 21, DIN 2999.
 Gas paralela conforme ISO 228 Classe A.
 Métrica conforme ISO R/262.

62450

RACCORDO A T MASCHIO LATERALE

OFF SET MALE TEE
 L-VERSCHRAUBUNG MIT INNEN/AUSSENGEWINDE
 TÉ À PIQUAGE MÂLE LATÉRAL
 RACOR A T MACHO LATERAL
 CONEXÃO EM "T" COM ROSCA LATERAL MACHO

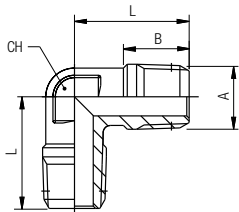


Code	A	B	B1	C	L1	L2	CH	Pack.
62450 00 44 02 00	1/8	7.5	8.5	13	36	18.5	12	10
62450 00 44 03 00	1/4	11	11	16.5	47.5	24.5	12	10
62450 00 44 04 00	3/8	11.5	12	20.5	52.5	29	15	10
62450 00 44 05 00	1/2	14	15	25.2	61.5	34	20	10

62500

RACCORDO A L MASCHIO

MALE ELBOW
 WINKELVERSCHRAUBUNG AUSSENGEW
 EQUERRE MÂLE
 RACOR A L MACHO
 CONEXÃO EM "L" COM ROSCA MACHO

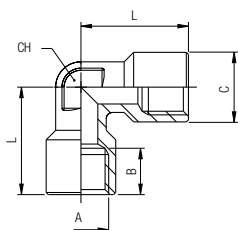


Code	A	B	L	CH	Pack.
62500 00 44 02 00	1/8	7.5	18	10	10
62500 00 44 03 00	1/4	11	24	12	10
62500 00 44 04 00	3/8	11.5	27	15	10
62500 00 44 05 00	1/2	14	29.5	20	10

62510

RACCORDO A L FEMMINA

FEMALE ELBOW
 WINKELVERSCHRAUBUNG MIT INNENGEWINDE
 EQUERRE FEMELLE
 RACOR A L HEMBRA
 CONEXÃO EM "L" COM ROSCAS FÊMEAS

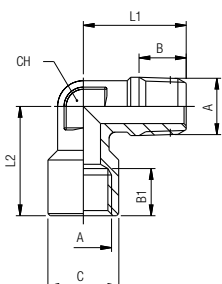


Code	A	C	B	L	CH	Pack.
62510 00 44 02 00	1/8	13	8.5	21	10	10
62510 00 44 03 00	1/4	16.5	11	25.5	12	10
62510 00 44 04 00	3/8	20.5	12	28	15	10
62510 00 44 05 00	1/2	25.5	15	32	20	10

62520

RACCORDO A L MASCHIO FEMMINA

MALE-FEMALE ELBOW
 WINKELVERSCHRAUBUNG MIT INNEN/AUSSENGEWINDE
 EQUERRE MÂLE / FEMELLE
 RACOR A L MACHO-HEMBRA
 CONEXÃO EM "L" MACHO-FÊMEA



Code	A	B	B1	C	L1	L2	CH	Pack.
62520 00 44 02 00	1/8	7.5	8.5	13	18	21	10	10
62520 00 44 03 00	1/4	11	11	16.5	24	25.5	12	10
62520 00 44 04 00	3/8	11.5	12	20.5	27	28	15	10
62520 00 44 05 00	1/2	14	15	25.5	29.5	32	20	10